

Lion Of Judah

Words and Music by
Robin Mark

$\text{♩} = 207$ INTRO

B \flat

VERSE

E \flat

B \flat



1. You're the Li - on of Ju - dah, the Lamb .
2. There's a shield in our hand and a sword .

4 E \flat B \flat



— who was slain, You as - cend - ed to heav - en and ev - er more will reign; At the
— at our side, there's a fire in our spir - its that can-not be de - nied; 'Cause the

7 B \flat E \flat B \flat



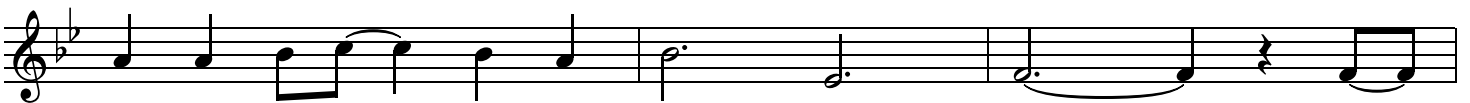
end of the age — when the earth You re - claim, — You will
Fa - ther has told us, for — these You have died, — for the

9 F



gath - er the na - tions be - fore — You. — And the eyes of all men will be
na - tions who gath - er be - fore — You. — And the ears of all men need to

12 E \flat F



fixed on the Lamb — who was cru - ci - fied; — With —
hear of the Lamb — who was cru - ci - fied; — Who des -

15 E \flat



wis - dom and mer - cy and jus - tice You'll reign at Your Fa - ther's
-cend - ed to hell, yet was raised up to reign at His Fa - ther's

CHORUS

18 F B \flat E \flat B \flat F

side.
side.

And the an - gels will cry, "Hail the Lamb _____

22 B \flat E \flat B \flat F

_____ who was slain for the world, rule in pow'r." _____

26 B \flat E \flat B \flat F

_____ And the earth will re - ply, "You shall reign _____

30 B \flat E \flat B \flat /D F/C B \flat

_____ as the King of all kings and the Lord of all lords."